





INNOVATIVE RF / RADIO / TV / VIDEO TEST & MEASUREMENT TOOLS

Presentation by **Eddy Vanderkerken**

Founder & General Manager of SOURCERER LLC --- since 2014 in Dallas, TX

The presentation will focus on the newest test & measurement tools, essential for the maintenance of a broadcast station.

With ever less technical support staff and shrinking budgets, everyone is looking for smaller, lighter, more versatile and easier to use devices that are affordable.

SOURCERER is always looking for new cool tools, especially for  *ATSC* 3.0  *NEXTGEN TV*

SOURCERER

YOUR SOURCE FOR
BROADCAST
TEST & MEASUREMENT

Agenda



SOURCERER

YOUR SOURCE
RF VIDEO TV BROADCAST
TEST & MEASUREMENT

- I Products & applications
- I Questions
- I Freebies
- I Door prize!
- I Hands on equipment

SOURCERER

YOUR SOURCE FOR
BROADCAST
TEST & MEASUREMENT

Company Org Chart (not so confidential)



Video testing: Analog, SDI and IP

PHABRIX Sx video generators & analyzers:

- Analog video, audio
- SD-SDI, HD-SDI and 3G-SDI with AES audio
- Selectable video patterns & audio up to 16 ch.
 - Including moving picture / zoneplates
 - Text insertion
- SFP's for optical, HDMI or IP ST 2110/2059/2022-6
- Picture, audio, waveform, vectorscope
- Eye Height & Jitter

PHABRIX QxP Portable Waveform Monitor

25G ST 2110 and 12G-SDI
with Battery Power:



SOURCERER

YOUR SOURCE FOR
BROADCAST
TEST & MEASUREMENT

Video testing: Analog, SDI and ASI

Telestream (Tektronix) video generators & analyzers:

- Analog
- SDI
- ASI

The WFM2300 Multiformat and Multistandard Portable Video Waveform Monitor provides an ideal solution for video installation and maintenance applications with an integrated high-brightness, low-power consumption LED backlit display in a convenient portable form factor, and with a truly complete feature set.



Tektronix[®]
telestream

SOURCERER

YOUR SOURCE FOR
BROADCAST
TEST & MEASUREMENT

ASI probe

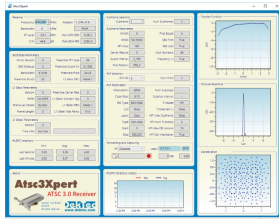
AT4USB ASIPOD

Lighter size transport stream probe

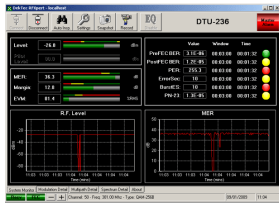
- Via USB to PC
- Truly pocket sized
- Record & Playback
- Lifetime DVS software license
- Also other probes and IP convertors



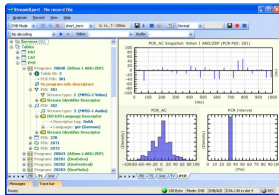
ASI and RF probes



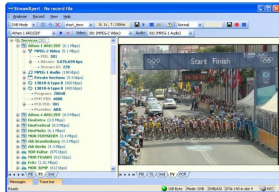
ATSC3XPert



RFXpert RF monitoring & analysis



StreamXPert ASI analyzer software



ATSC 3.0



ATSC 1.0 & ATSC 3.0 probe



8VSB & ASI probe



ASI, IP and RF tools

Triveni Digital StreamScopeS RM and XM

- Comprehensive ASI TS monitoring, alarming and analysis
- Audio loudness monitoring for **CALM** Act compliance
- CC monitoring 

QoS	Service	CC	Bitrate	Priority 1 Events	Events	Triggers	...Evaluated At
98	Y Info ASI A		Channel 12.3 AC-3 Audio 4.67 Mb/s AC-3 Audio 197.48 kb/s MPEG2 Video 4.34 Mb/s				12:28:12 PM EDT
98	Y Info ASI B		Channel 12.3 AC-3 Audio 4.67 Mb/s AC-3 Audio 197.48 kb/s MPEG2 Video 4.34 Mb/s		5		12:28:12 PM EDT
98	Y Info Channel 12 RF (QAM BYSB) A		Channel 12.3 AC-3 Audio 4.22 Mb/s AC-3 Audio 197.32 kb/s MPEG2 Video 3.89 Mb/s		6		12:24:06 PM EDT
98	Y Info ASI D		Channel 12.3 AC-3 Audio 4.67 Mb/s AC-3 Audio 197.48 kb/s MPEG2 Video 4.34 Mb/s		5		12:28:12 PM EDT
42	WUVP-DT Channel 28 RF (QAM BYSB) A		Channel 65.1 AC-3 Audio 7.13 Mb/s AC-3 Audio 455.94 kb/s MPEG2 Video 6.67 Mb/s	4	9		12:28:54 PM EDT
56	WTFX-DT Channel 12 RF (QAM BYSB) A		Channel 29.1 AC-3 Audio 11.85 Mb/s AC-3 Audio 155.29 kb/s MPEG2 Video 11.69 Mb/s	3	9		12:20:20 PM EDT
74	WPSG Channel 32 RF (QAM BYSB) A		Channel 57.1 AC-3 Audio 7.35 Mb/s AC-3 Audio 423.68 kb/s MPEG2 Video 6.93 Mb/s	2	6	4	12:17:05 PM EDT
98	WHYY2 ASI A		Channel 12.2 AC-3 Audio 3.60 Mb/s AC-3 Audio 197.48 kb/s MPEG2 Video 3.41 Mb/s		5		12:28:12 PM EDT
97	WHYY2 ASI A		Channel 12.2 AC-3 Audio 3.60 Mb/s AC-3 Audio 197.32 kb/s MPEG2 Video 3.41 Mb/s		6		12:28:12 PM EDT
96	WHYY2 Channel 12 RF (QAM BYSB) A		Channel 12.2 AC-3 Audio 4.58 Mb/s AC-3 Audio 197.32 kb/s MPEG2 Video 4.26 Mb/s		6		12:24:06 PM EDT
98	WHYY2 ASI D		Channel 12.2 AC-3 Audio 3.60 Mb/s AC-3 Audio 197.48 kb/s MPEG2 Video 3.41 Mb/s		5		12:28:12 PM EDT
92	WHYY Channel 12.1		Channel 12.1 AC-3 Audio 9.12 Mb/s		7		12:28:12 PM EDT



ATSC 3.0

triveni
DIGITAL

SOURCERER

YOUR SOURCE FOR
BROADCAST
TEST & MEASUREMENT

ASI and RF probes



ReFeree3
Compact ATSC 1.0/3.0 field analyzer

EdgeProbe
Dual or Quad ATSC 1.0/3.0, ASI, IP monitoring



RF Catcher
Portable RF Recording & Playback

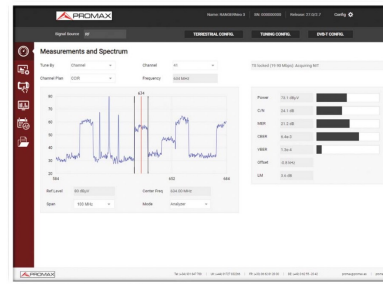


RF monitoring



PROWATCH Neo

TV / FM monitoring with 1, 8 or 16 inputs
SNMP / Web Server remote access and control
Alarm notifications
Compatible with DataMiner
Decoding up to H.265 and 4K UHD
ATSC, DVB-S, DVB-S2, J.83/B, FM with RDS
Optional spectrum monitoring and storage
Optional ASI monitoring with TS analysis and recording
Optional IPTV multicast measurement and decoding
7 GB for measurement protocols, screenshots and transport stream recordings
Features include constellation diagram, LTE ingress test, Dynamic echoes analysis, StealthID (instant identification of tuning parameters), PLS (Physical Layer Scrambling), Ultra fast spectrum analyzer (70 ms sweep time), with MAX and MIN hold,
FM RDS radio measurement and decoding,
Screenshots and Datalogger for measurement reports, Beacon-Flyaways SNG and VSAT, Wideband LNB, WiFi 2.4 GHz, LTE 1.8 GHz, OTT, Service Recording, Field strength measurement, Task planner, Merogram, Spectrogram, Signal Monitoring, Remote control (webControl), MER by carrier, Channel Monitoring



RF monitoring

RCS100 / RCS400

ATSC & ATSC 3.0
FM radio
IP

8VSB and/or ATSC 3.0 Monitoring System
1x or 4x RF and ASI inputs
All relevant parameters, including MER, BER and C/N, as well as RF Spectrum
STLTP analysis through IP input
Video thumbnails
SNMP alarms
Video thumbnails
SNMP alarms

GSETEL



SOURCERER

YOUR SOURCE FOR
BROADCAST
TEST & MEASUREMENT

24/7 Content Monitoring



LUNA, LUNA+, ENCOMPASS Compliance Monitoring Multiviewer & Smart Logger Systems

24/7 capture solution with live multiviewer, QoS monitoring, logging, alerting and Transport Stream analytics:

KEY FEATURES

- Scalable Inputs
- 24/7 Monitoring and Logging
- 24/7 Proxy Capture
- Local Multiviewer/Video Wall
- Remote Access via Web or Mobile App
- User Configurable Alerts and Alarms
- Email, Text and SNMP Alerts
- Microsoft Teams, WebEx Teams, Slack
- Transcoding
- Live Stream Editing
- Cloud Services Integration

MEASUREMENTS

- Closed Captioning 
- 608 & 708
- XDS Data
- SCTE 35/104
- Nielsen Audio Watermarks
- LKFS Measurements per ATSC A/85 CALM Act
- ETSI TR101.290 & ATSC A/78
- Signal Lost
- Black/Static Image
- PSIP loss, logging

Inputs options from baseband (SDI, HD-SDI, UHD, Composite, HDMI) to TS (ASI, DVB, ATSC 1.0, ATSC 3.0) to IP (UDP, IGMPv3, SMPTE 2022, SMPTE 2110) to OTT Platforms (HLS, MPEG-DASH, vMVPD capture).

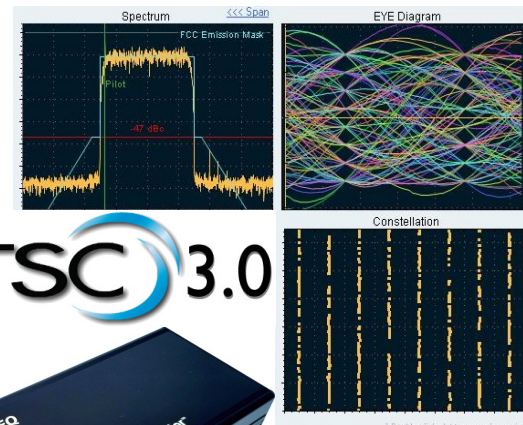


24/7 TV Monitoring, Commissioning



AVATEQ AVQ 200 / AVQ1020 / AVQ1022

- ATSC and/or ATSC 3.0
- MER, SNR, EVM
- RMS, PAPR, Max, CCDF
- Spectral measurements – signal bandwidth, central frequency shift, shoulder attenuation
- Linear Distortions – Amplitude and Phase Responses, Group Delay
- Echo profile and matching issues
- Exciter optimization
- Equalizer On/Off



SOURCERER

YOUR SOURCE
FOR BROADCAST
TEST & MEASUREMENT

www.sourcerer.biz

Real time spectrum analyzers



- 9 kHz to 6 GHz / 8 GHz
- SUPER fast capture of 44 to 245 MHz bandwidth, up to 3 THz / s
- PC (USB) operated with free RTSA Suite PRO Software



**8 GHz USB Real-Time Spectrum Analyzer
& Vector Signal Generator**

Real time spectrum analyzers

- Example using the V6 RTSA:
- Launch / landing Telemetry & Comms of BLUE ORIGIN space flight
- July 20th 2021



Measurement antennas

- Omnidirectional
- Directional
- Magnetic
- Electrical
- Pre-amplifiers (battery operated)



Antenna testing, line and filter sweeping

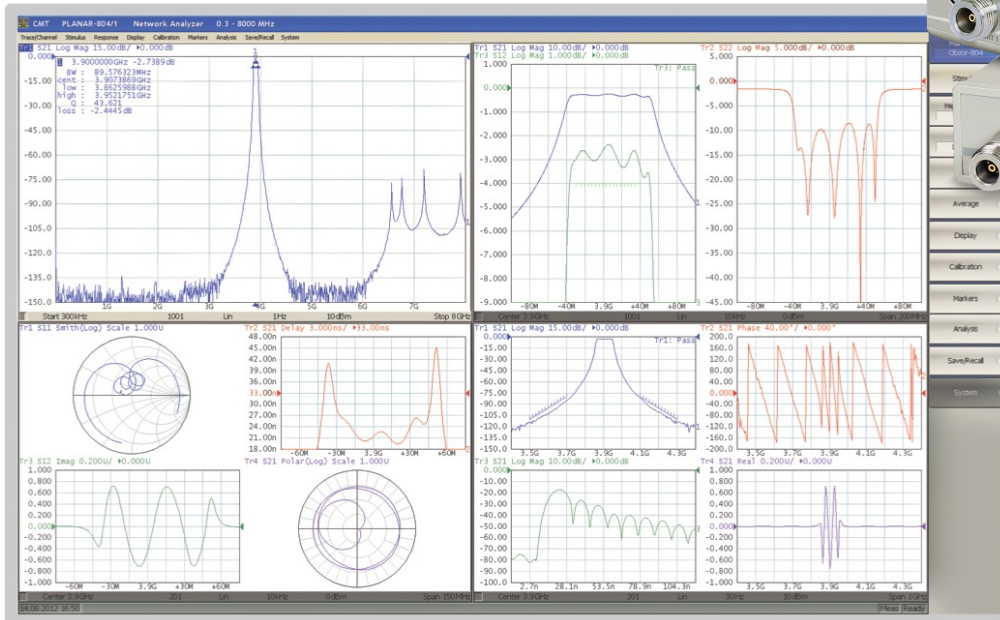
- 2-port VNA's with single or dual paths
- USB connection to PC
- S11 and S12 or all 4 S-parameters
- 200,000 measurement points, 70us
- All measurements incl. TDR, DTF

S5045 2-port dual path
From 9kHz to 4.5GHz



TR1300/I 2-port single path
From 300kHz to 1.3GHz

Auto Cal Module available!



SOURCERER

YOUR SOURCE FOR
BROADCAST
TEST & MEASUREMENT

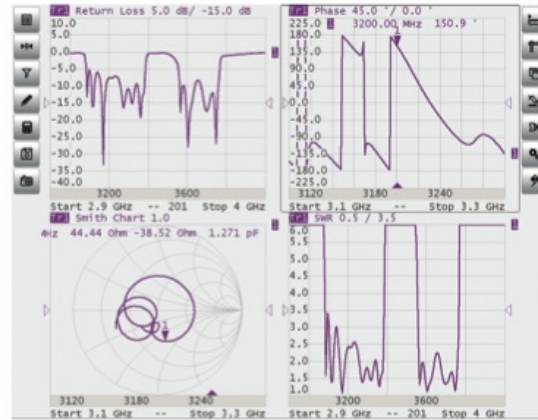


Antenna testing

- Single port VNA
- USB connection to PC
- S11 reflection measurement:
 - Smith Chart
 - SWR
 - Return Loss
 - Cable Loss
 - Distance to fault
 - Time domain
- 4 simultaneous measurement channels



R60: 1MHz to 6GHz
R140: 85MHz to 14GHz



RF Power Sensors

LadyBug LB5908A

True RMS Average Power Sensor

1 MHz - 8 GHz

-60 dBm to +26 dBm

USB controlled, PMA-12 software included

N-male connector (others available as option)



RF Power Sensors

R&S offer a wide range of RF power sensors:

- Connect to power meter
- Control over USB

- Example = NRPI8T
- DC to 18GHz
- -35dBm to 20dBm
- (or from 300nW to 100mW)



TV testing



ATLAS NG



- 10.1" Multitouch screen
- Up to 6 GHz new spectrum analyzer
- DVB-S2x and ATSC 3.0
- Multicast/unicast multistream analysis
- SDI analysis
- Advanced OTT measurements
- Basic optical fibre measurements

VERSION **DVB** **ISDB-T** **ATSC** **ATSC 3.0**

ATLAS

NEXTGEN TV

ATSC 3.0

- 6 GHz Spectrum Analyzer
- ATSC 1.0 & 3.0, DVB-S/S2/S2X
- MPEG-2/4 AVC, H.264, H.265
- HEVC and 4K UHD
- ASI TS Analyzer, Recorder, Player
- FM + RDS
- 3G-SDI for studio
- IPTV, OTT, Wi-Fi Analyzer
- I pps / GPS



RANGER Neo 2

- IPTV analyzer
- High resolution filters
- TS-ASI input and output
- Common Interface slot
- Transport Stream recorder/player
- Transport Stream analyzer


VERSIONS **DVB** **ISDB-T** **DVB** **ISDB-T** **ATSC**



RANGER Neo +

- Web Server remote control
- Merogram and Spectrogram
- Fibre optics and GPS options
- More than 4 hours battery time


VERSIONS **DVB** **ISDB-T** **DVB** **ISDB-T** **ATSC**



RANGER Neo Lite

- Touch screen
- HEVC H.265 decoding
- Wide band LNB compatibility
- Wi-Fi analyzer

VERSIONS **DVB** **ISDB-T** **DVB** **ISDB-T** **ATSC**



HD RANGER UltraLite

- Tablet size
- The lightest in the range

VERSION **DVB**

Non-ATSC



HD RANGER Eco

- DVB-T2, DVB-C2, DVB-S2, DSS
- Super spectrum analyzer
- Triple split display
- Dolby Digital Plus
- Dynamic echoes analyzer

VERSION **DVB**

SOURCERER

YOUR SOURCE FOR
BROADCAST
TEST & MEASUREMENT

TV testing

Full featured, including:

- 6 GHz Spectrum Analyzer
- ATSC 1.0 & ATSC 3.0
- DVB-S/S2/S2X
- QAM – J.83/B
- IPTV, OTT, Wi-Fi Analyzer
- MPEG-2/4 AVC, H.264, H.265
- HEVC and 4K UHD
- ASI Analyzer, Recorder, Player
- FM + RDS
- 3G-SDI for studio
- 10 MHz / 1 pps / GPS / drive test

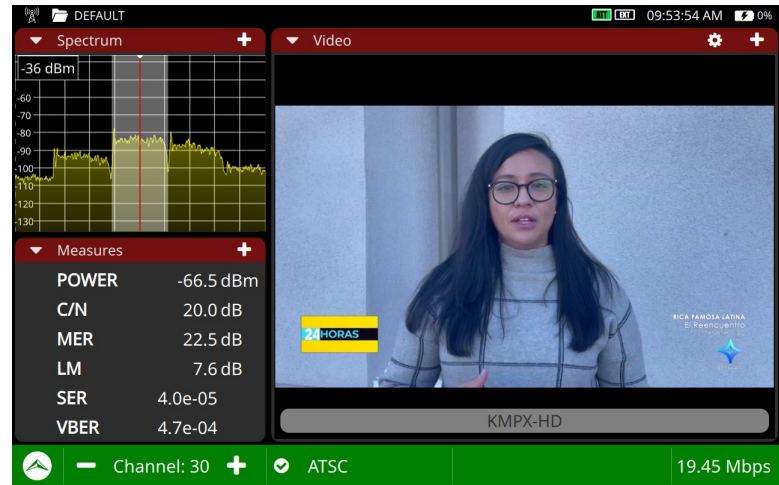
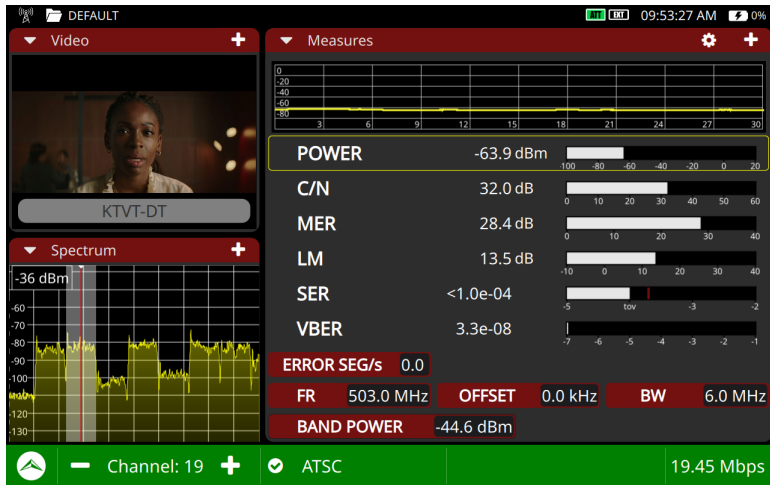
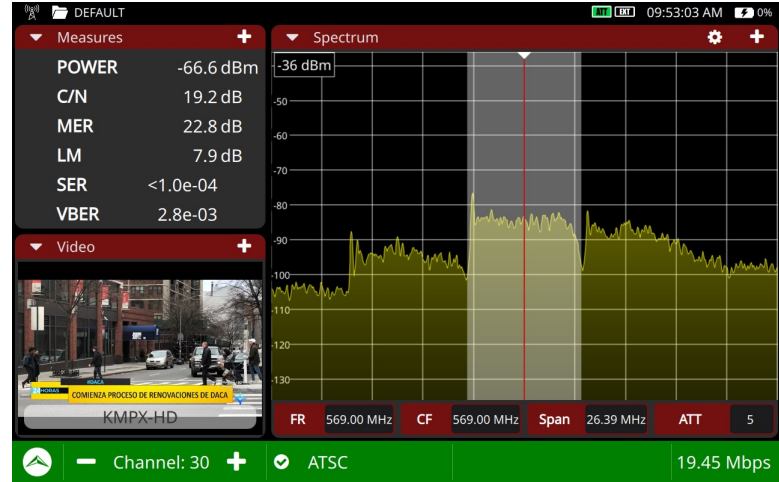


SOURCERER

YOUR SOURCE FOR
BROADCAST
TEST & MEASUREMENT

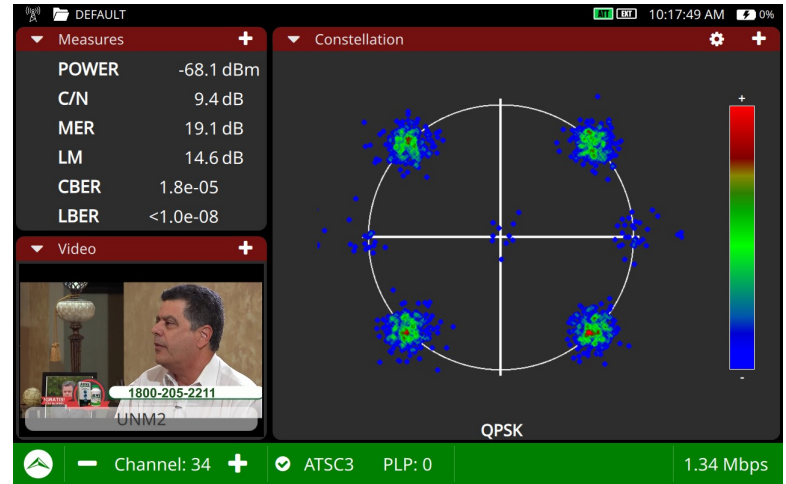
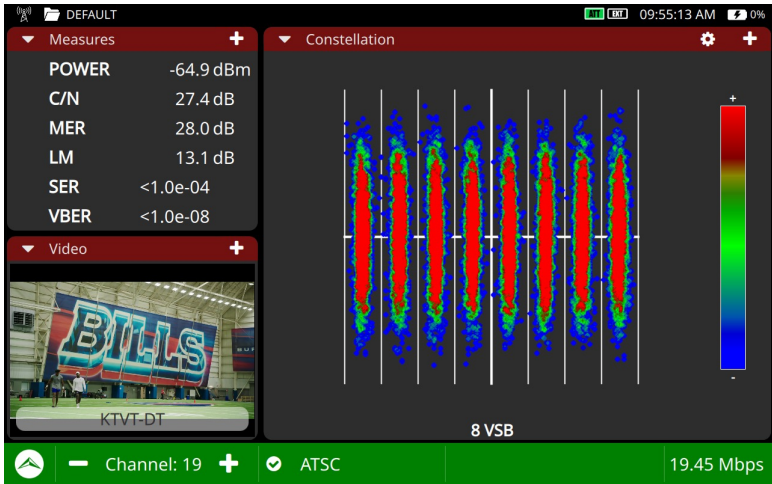
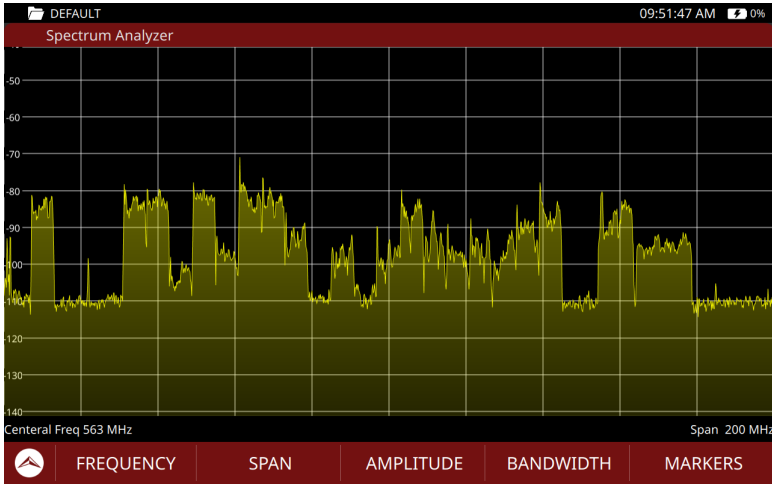
TV testing

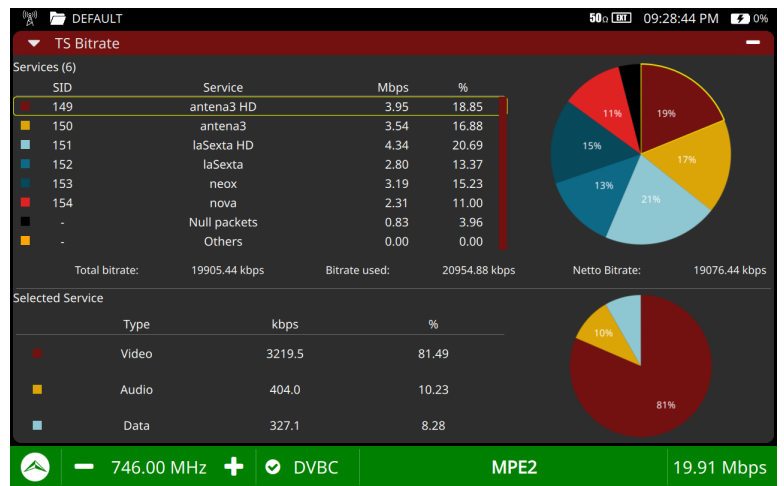
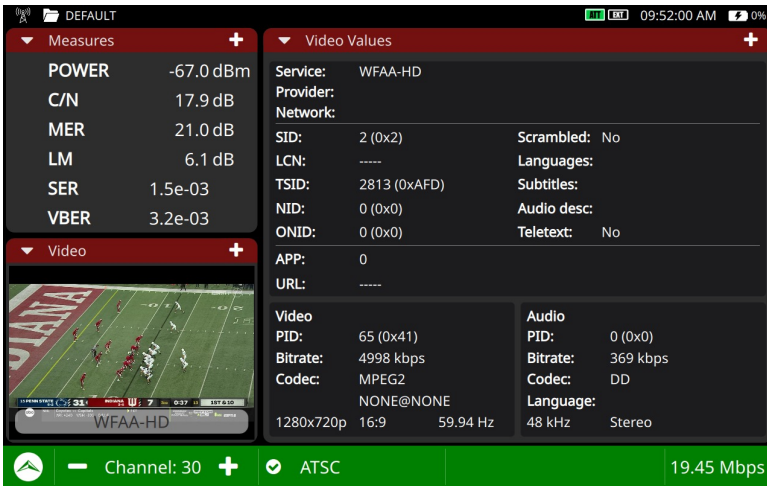
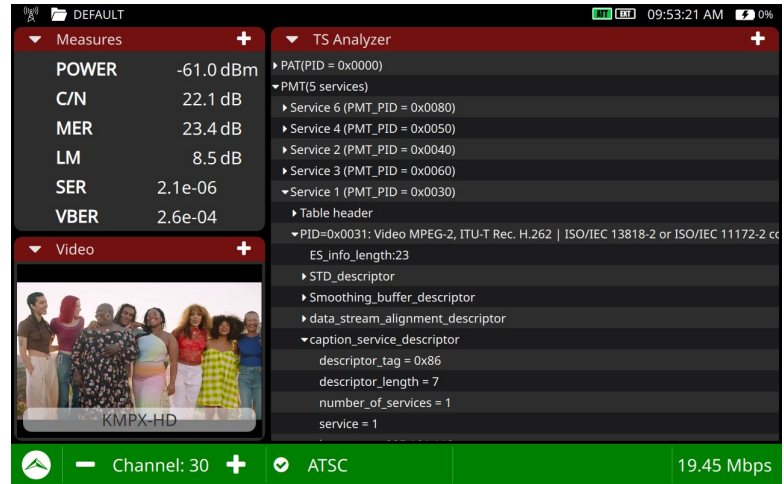
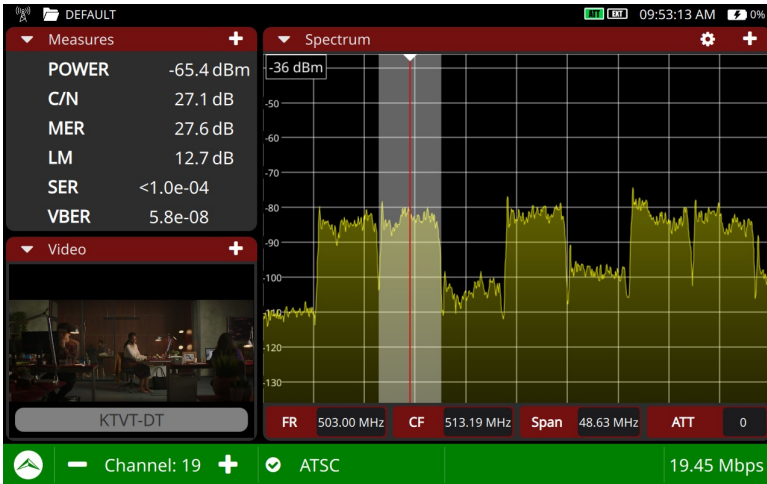




SOURCERER

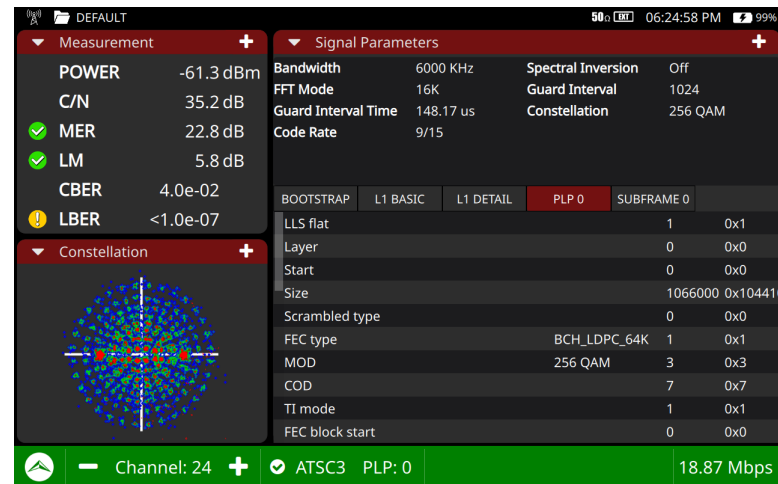
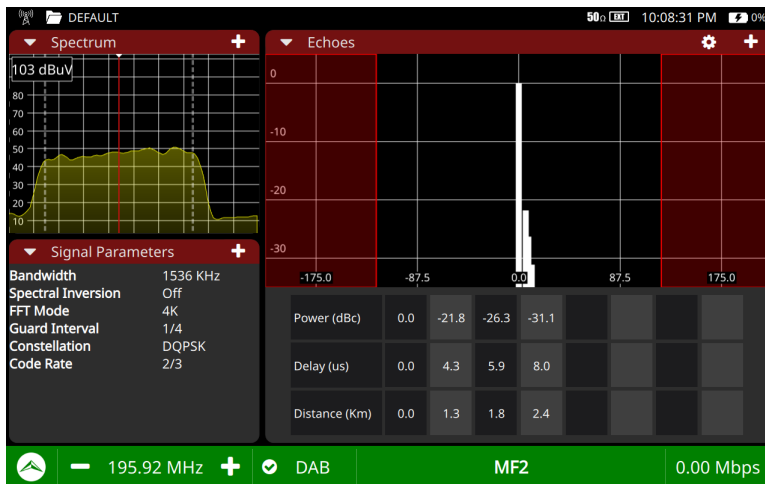
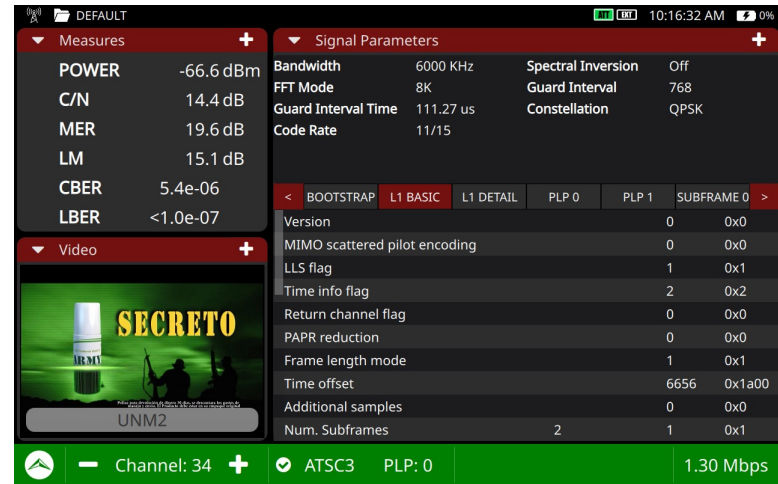
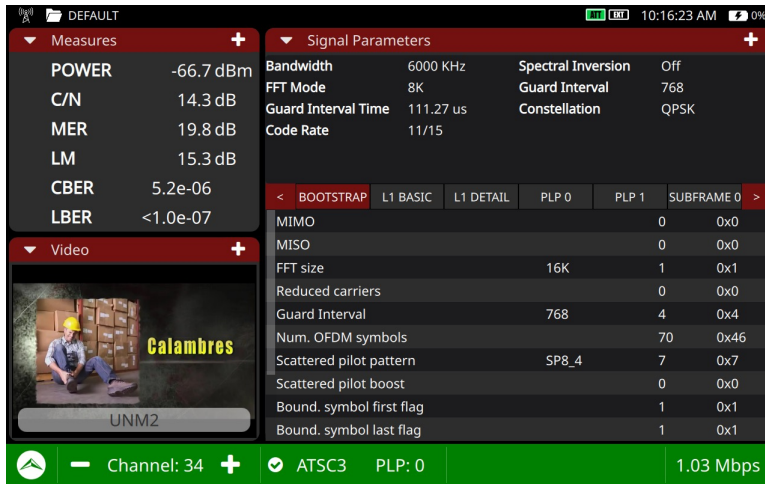
YOUR SOURCE FOR
BROADCAST
TEST & MEASUREMENT





The screenshot displays the SOURCERER software interface, which is used for broadcast test and measurement. It is divided into several panels:

- Measures:** Shows key performance indicators such as POWER, C/N, MER, LM, SER, and VBER for both channels.
- TS Bitrate:** Displays a table of services (SID, Service, Mbps, %) and a pie chart showing the distribution of bitrate usage.
- Video:** Provides a visual preview of the video stream from the selected service.
- TS Analyzer:** Offers a detailed view of the Transport Stream (TS) structure, including PAT, PMT, and TVCT tables.
- Channel Status:** A green bar at the bottom indicates the channel number (24 and 19), ATSC mode, and current bitrate (19.39 Mbps).
- TS PIDs:** A table listing various PIDs and their descriptions, including PAT, MT, meter stream, and audio/video streams.
- TS Alarms:** A grid of alarm indicators for various TS parameters, categorized by priority (1, 2, 3).



TV testing

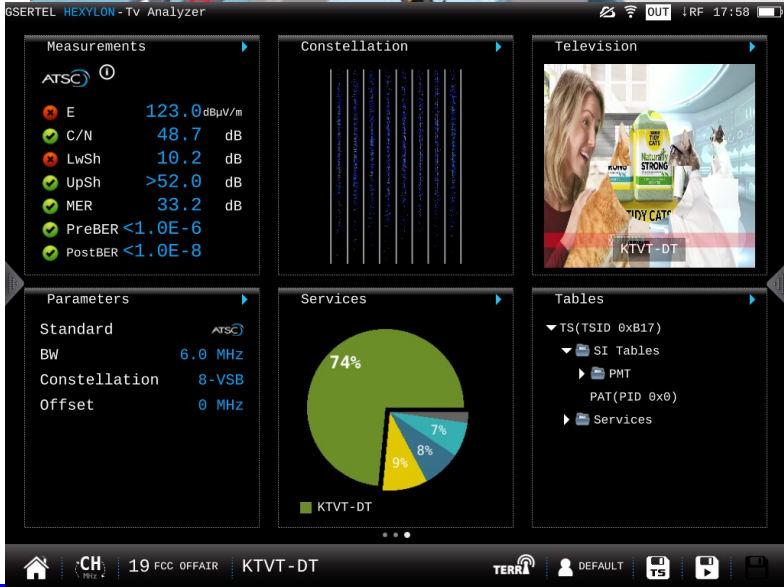


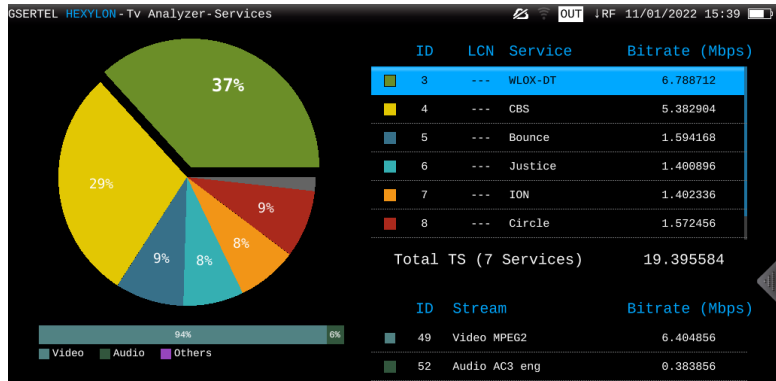
HEXYLON

- 3.3 GHz Spectrum Analyzer (even with Waterfall)
- ATSC 8VSB
- ATSC 3.0
- Satellite DVB-S/S2/S2X
- TSoIP
- QAM – J.83/B – incl. optical
- Analog, DVB-T/T2, ISDB-T(b)

- HEVC 4K video
- WiFi (2.4 & 5.8 GHz)
- Advanced FM + RDS
- Remote control (VNC)

- TS analyzer / recorder
- RF recorder (25 MHz, 64GB)
- Drive test with GPS





GSERTEL HEXYLON - TV Analyzer - Tables

- TSID 0xB23
 - SI Tables
 - PAT (PID 0x0)
 - PMT [CHARGE] (PID 0x50)
 - PMT [KTXD-DT] (PID 0x30)
 - PMT [COMET] (PID 0x40)
 - PMT [TBD] (PID 0x60)
 - PMT [SBN] (PID 0x70)
 - Services
 - Service 1 (0x1) [KTXD-DT]
 - PID 49 (0x31) - Video MPEG2
 - PID 52 (0x34) - Audio AC3 eng
 - Service 2 (0x2) [COMET]
 - Service 3 (0x3) [CHARGE]
 - Service 4 (0x4) [TBD]
 - Service 5 (0x5) [SBN]

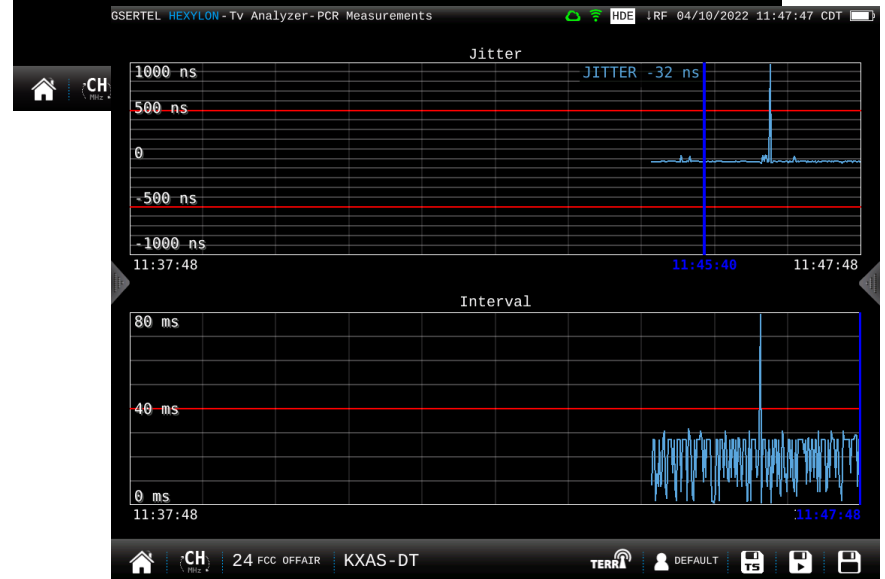
TID	PID	Program number	Version	Current next indicator	Section number	Last section number	PCR PID	Descriptor Tag	Descriptor tag	Stream type
2 (0x2)	80 (0x50)	3 (0x3)	30 (0x1E)	1 (0x1)	0 (0x0)	0 (0x0)	81 (0x51)	5 (0x5) Registration de	135 (0x87)	2 (0x2) Video MPEG2
										129 (0x81) Audio AC3

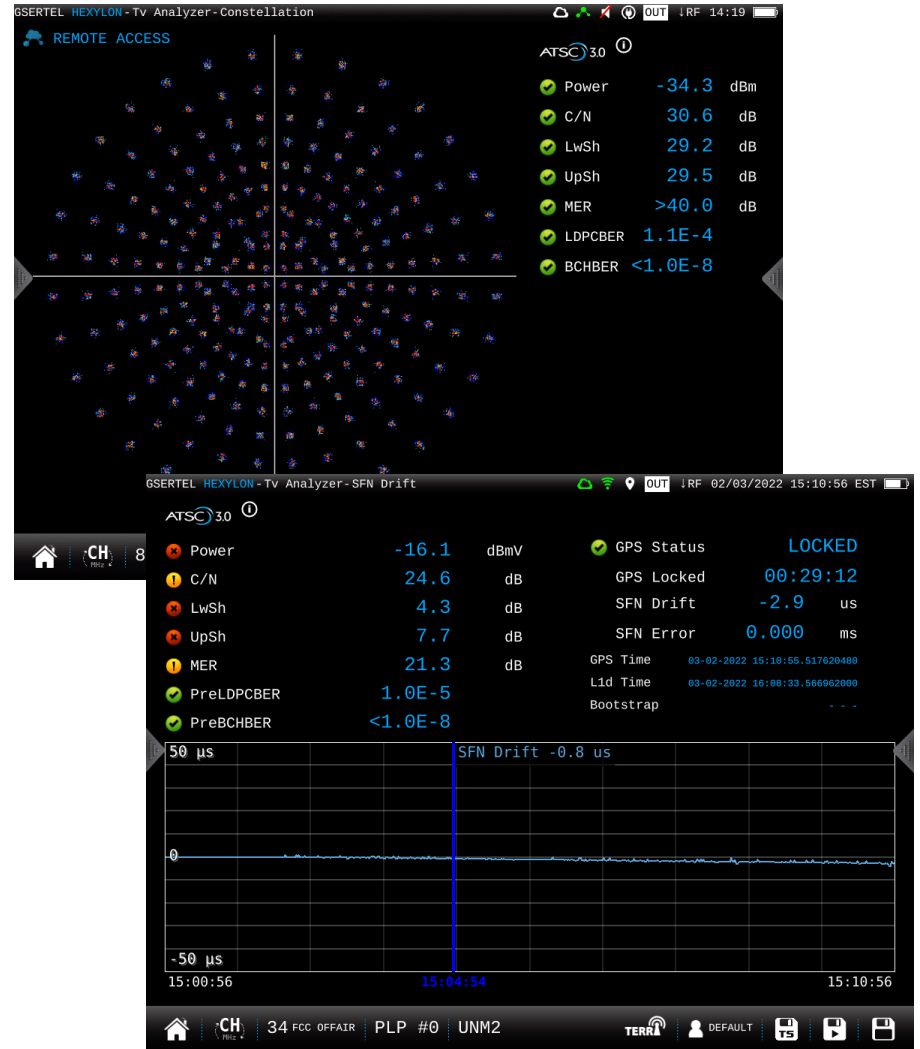
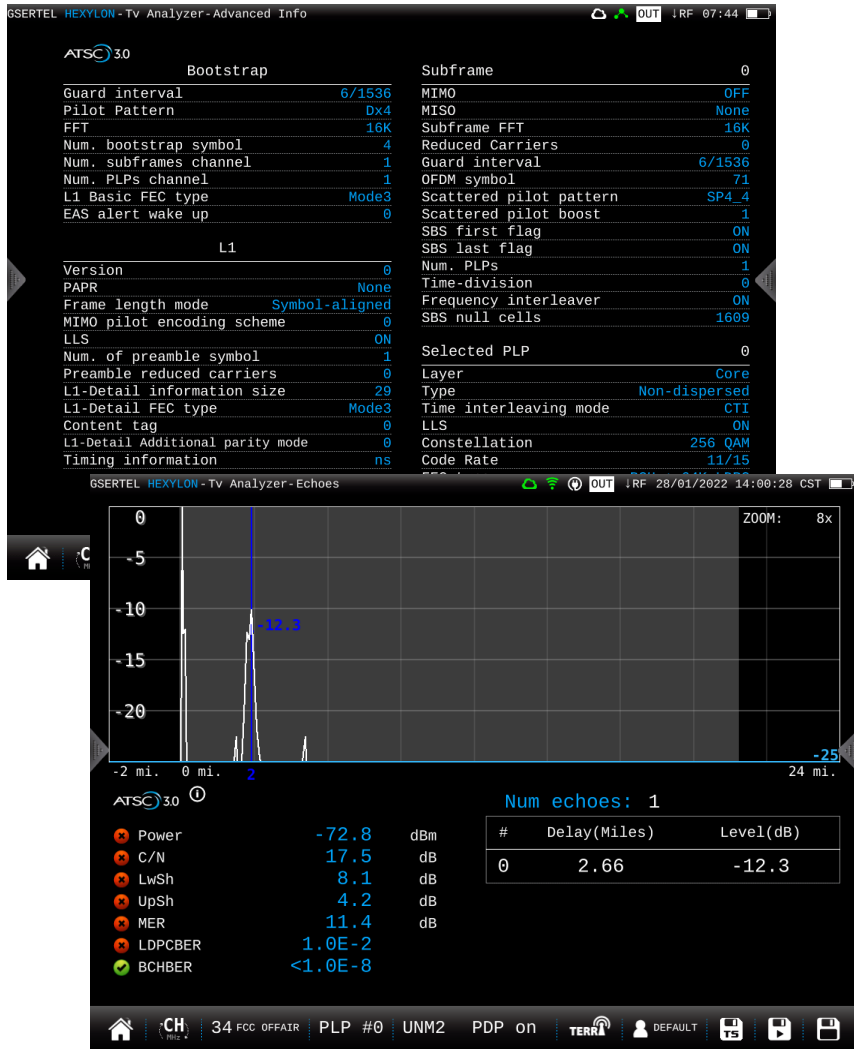
GSERTEL HEXYLON - TV Analyzer - Alarms

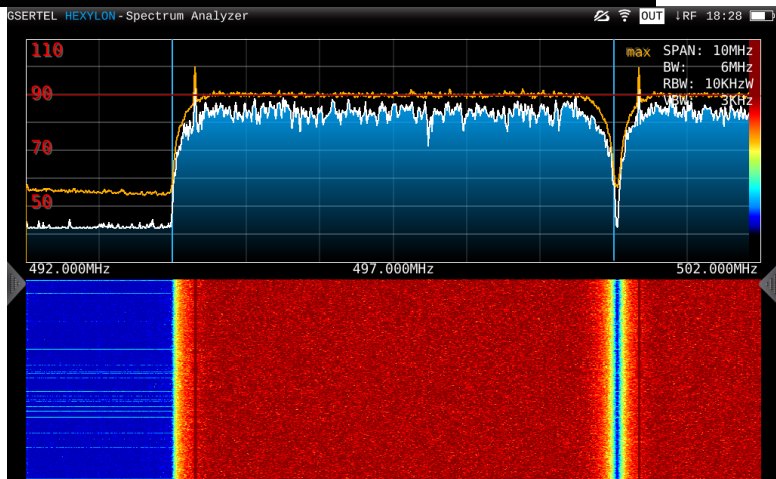
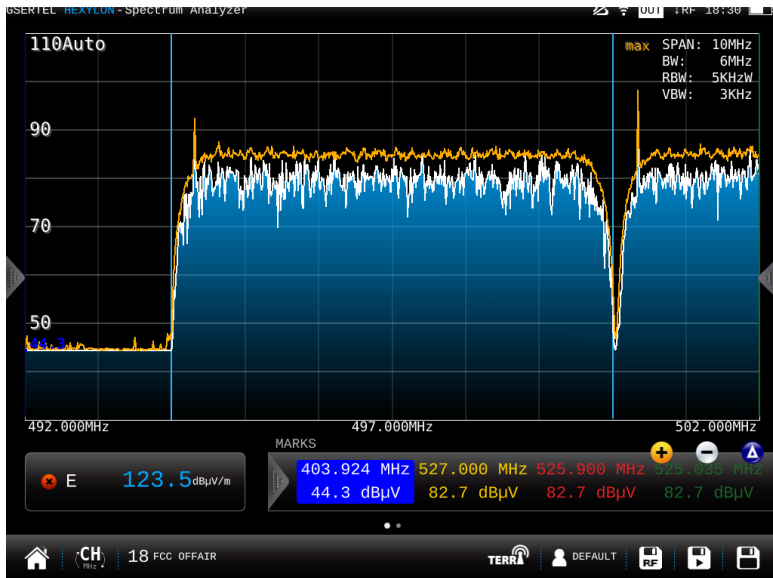
Priority 1	Priority 2	Priority 3
1.1-TS sync loss	2.1-Transport error	3.1a-NIT error
1.2-TS Sync byte error	2.2-CRC error	3.1b-NIT other error
1.3-PAT error	2.3/4-PCR error	3.2-SI repetition
1.4-Cont. count error	2.5-PTS error	3.3-Buffer error
1.5-PMT error	2.6-CAT error	3.4-Unreferenced PID
1.6-PID error		3.5-SDT error
1.7-TS error		3.6a-EIT error
		3.6b-EIT other error
		3.7-RST error
		3.8-TDT error

Alarm	Time
3.1a-NIT error	15:41:56
3.4-Unreferenced PID	15:44:10
3.5-SDT error	15:44:10
3.8-TDT error	15:44:10

CH 23 FCC OFFAIR KTXD-DT







SOURCERER

YOUR SOURCE FOR
BROADCAST
TEST & MEASUREMENT

GSERTEL HEXYLON - Analizador Tv 7638mV-1064mA 45,48,42°(0) 71x IP FAB 1 07:17

ACCESO REMOTO

Televisión

Tablas

- TS
 - LLS TABLES
 - SLT
 - Servicio 5002 [WBFF]
 - Servicio 5003 [WBAL]
 - Servicio 5004 [WMAR]
 - Servicio 5005 [ESG]
 - Servicio 5006 [WMPT]
 - Servicio 5007 [WNUV]

Análisis IP

IPTV

Pqts	1953	pps
Min pqt llegada	11.48	µs
Max pqt llegada	1982.80	µs
IP payload BR	21.866	Mbps
UDP payload BR	21.429	Mbps
Factor Retardo	988.13	ms
Tasa Media Perdidas	0	%
Frames IP perdidas	82408	frames

stltp PLP #0 WMPT 32.11.51 30000

Max pqt llegada	2763.32	µs	Protocolo	RTP
IP payload BR	21.902	Mbps		
UDP payload BR	21.463	Mbps		
Factor Retardo	988.78	ms		
Tasa Media Perdidas	0	%		
Frames IP perdidas	82408	frames		

100 Mbps IP payload bitrate 21.913 Mbps 1000 µs

80 UDP payload bitrate 21.423 Mbps

60 Min pqt llegada 11.48 µs

40 Max pqt llegada 2080.20 µs

20

07:09:39 07:16:38 07:19:39

stltp PLP #0 WMPT

GSERTEL HEXYLON - Analizador Tv-Tabl#643mV-1064mA 44,49,43°(0) 71x IP FAB 113 07:19

ACCESO REMOTO

PLP ID 0

- LLS TABLES
 - SLT
 - Servicio 5002 [WBFF]
 - Servicio 5003 [WBAL]
 - Servicio 5004 [WMAR]
 - Servicio 5005 [ESG]
 - Servicio 5006 [WMPT]
 - Servicio 5007 [WNUV]
 - LMT TABLE
 - PLP #0
 - PLP #1
 - PLP #2
 - Multicast 1
 - Destination IP 224.0.23.60
 - Destination Port 4937
 - Source IP 0.0.0.0
 - Source Port 0
 - Multicast 2
 - Destination IP 239.255.54.1
 - Destination Port 15007
 - Source IP 0.0.0.0
 - Source Port 0
 - Multicast 3
 - Destination IP 239.255.54.1
 - Destination Port 5001
 - Source IP 0.0.0.0
 - Source Port 0

GSERTEL HEXYLON - WiFi Analyzer

WiFi List

- Bloemenheuvel
- SpectrumSetup-37_E...
- WIFI052950
- SpectrumSetup-37
- ngHub_319441NX00943
- FlyingCow
- Linksys03312

WiFi Measures

Status Unlocked

Linksys03312

CH 4 2427 MHz

Level -84 dBm

Time Graph

WiFi: 15

Channel Map

Bloemenheuvel

SpectrumSetup-37_EXT

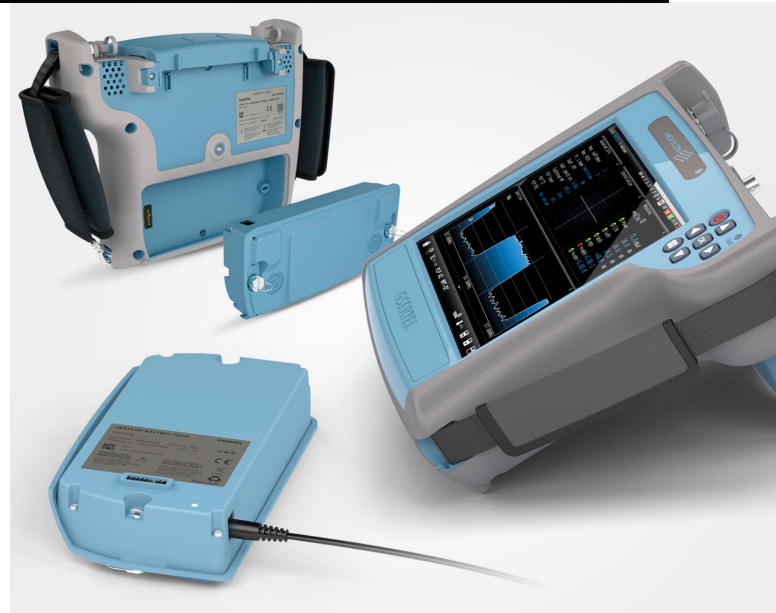
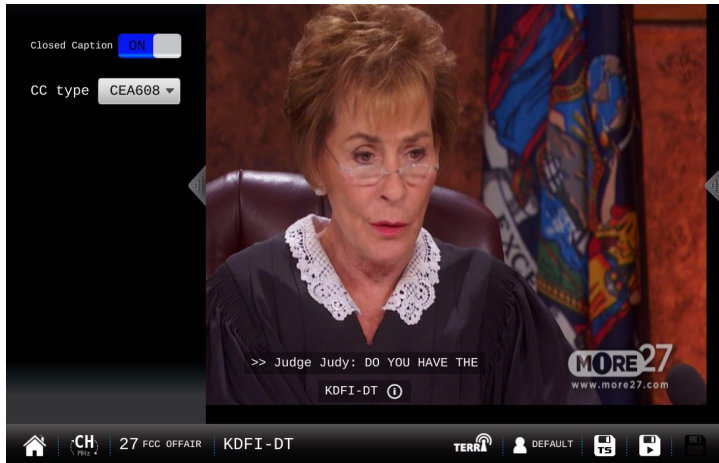
ngHub_319441NX00943

Linksys03312

FlyingCow

WIFI052950

1 3 5 7 9 11 13



SOURCERER

YOUR SOURCE FOR
BROADCAST
TEST & MEASUREMENT

Low budget TV testing

H 3.0 Evolution

- 1 GHz Spectrum Analyzer
- ATSC 8VSB
- ATSC 3.0
- Remote control

Retrofittable options:

- ATSC 3.0
- HEVC
- TSoIP
- WiFi

ATSC 3.0

nextgentv

H30 EVOLUTION®

ALL THE FUNCTIONS YOU NEED
NOW IN YOUR SMARTDEVICE

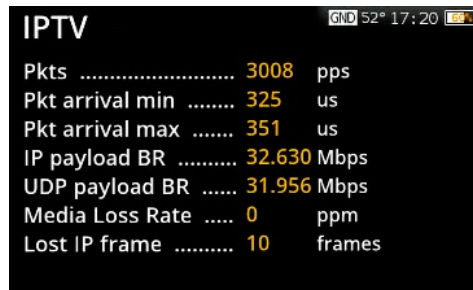
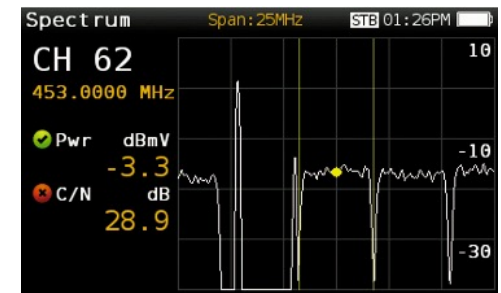
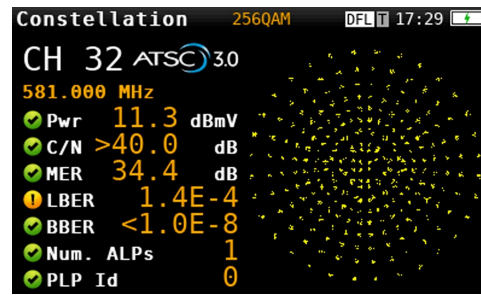
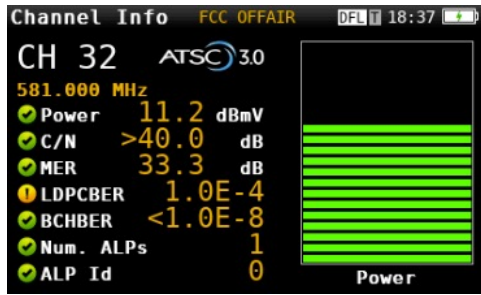
READY FOR NEXTGEN TV

ATSC 3.0

Televés®

SOURCERER

YOUR SOURCE FOR
BROADCAST
TEST & MEASUREMENT

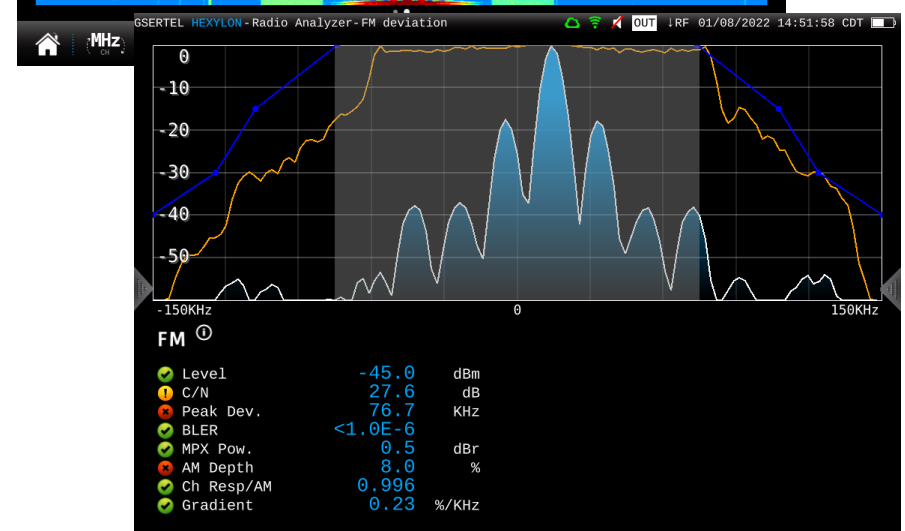
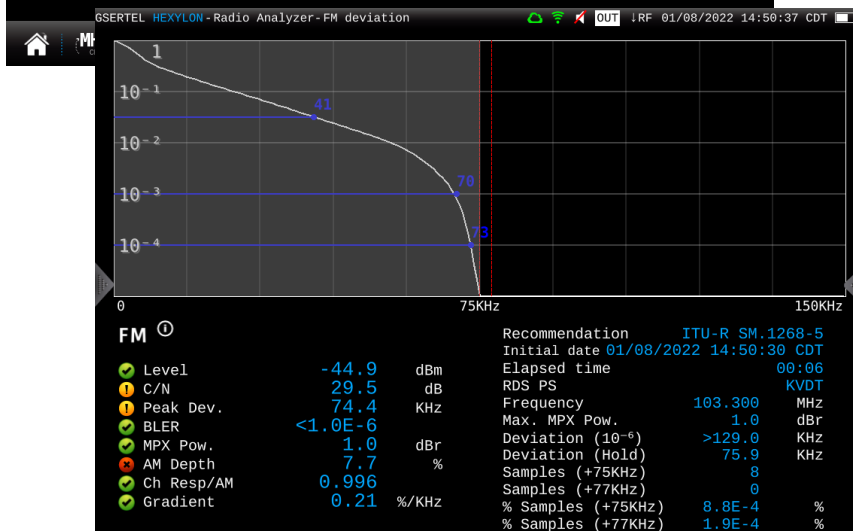
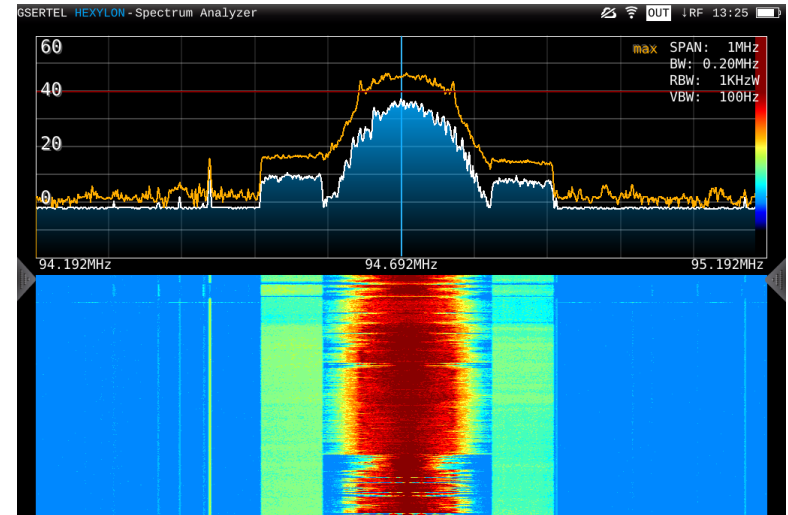
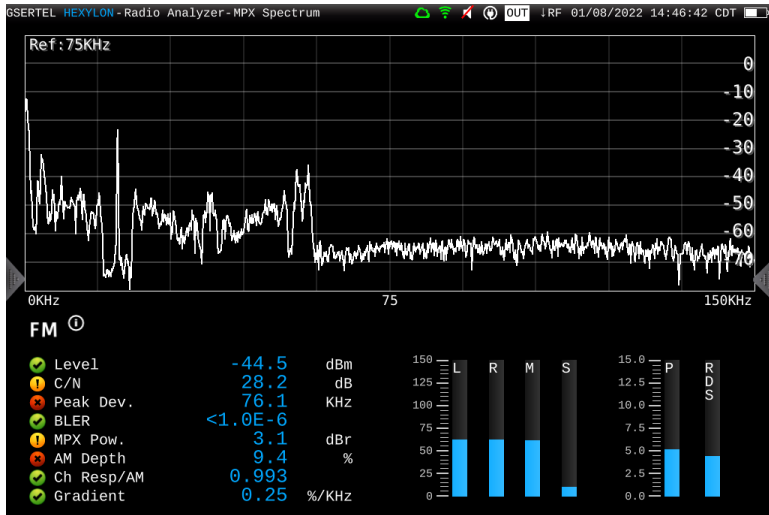


SOURCERER

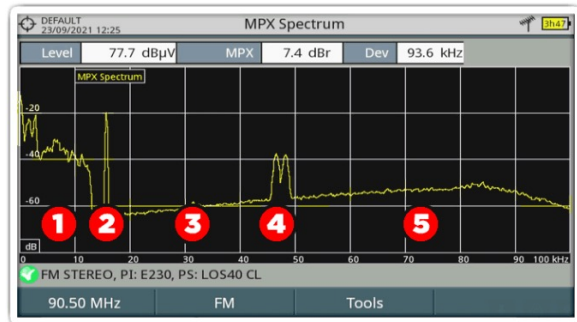
YOUR SOURCE FOR
BROADCAST
TEST & MEASUREMENT

FM radio testing (+ RDS)

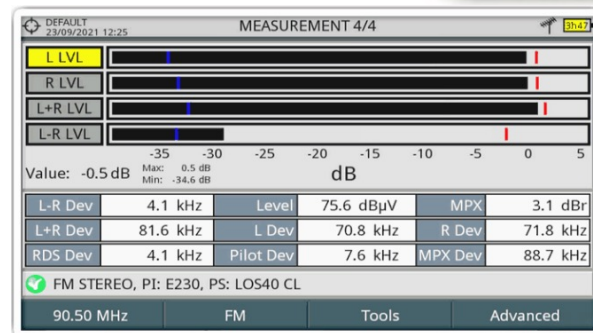




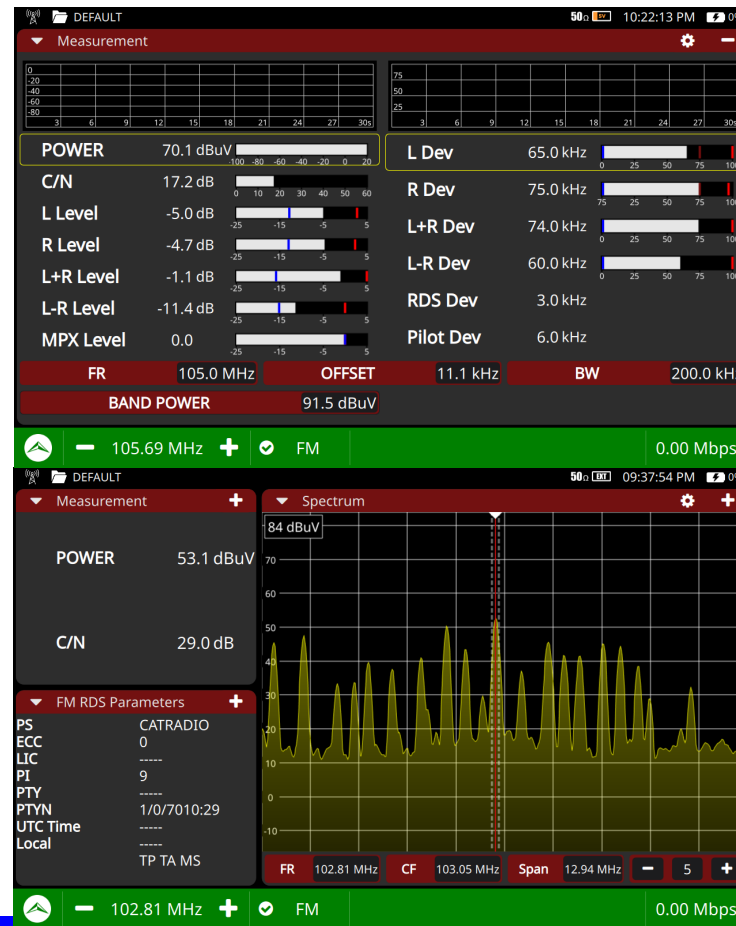
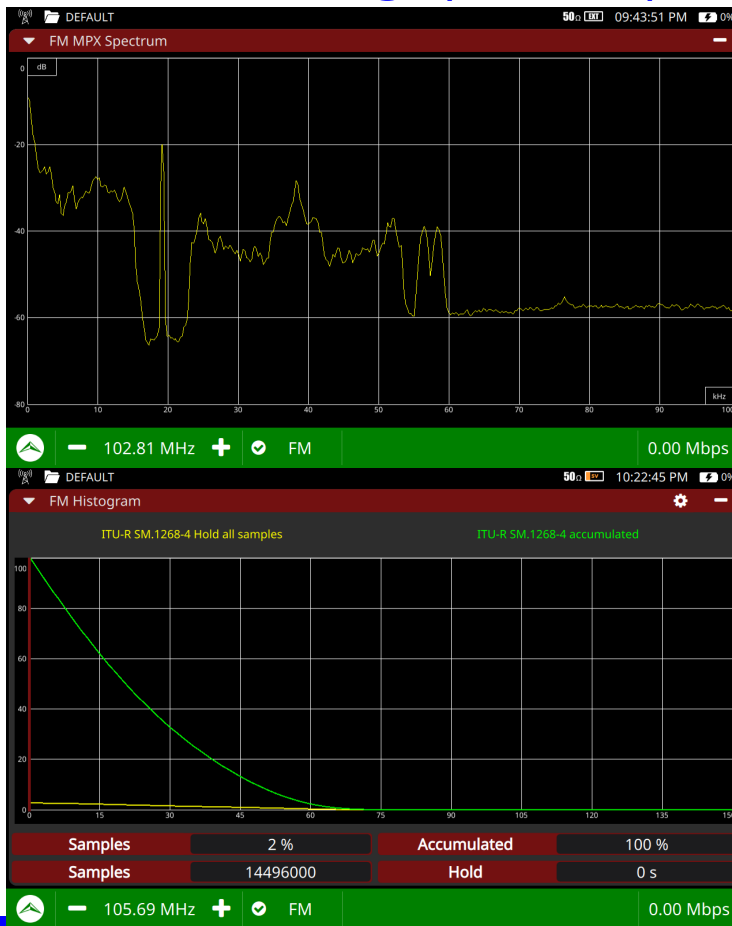
FM radio testing (+RDS)



1. L+R subcarrier. This is what we listen in FM mono receivers.
2. Stereo pilot.
3. L-R subcarrier. This information enables the stereo FM receivers to restore both audio channels.
4. RDS subcarrier.
5. SCA services: Reserved to encode information in many ways.



FM radio testing (+RDS)



SOURCERER

YOUR SOURCE FOR
 BROADCAST
 TEST & MEASUREMENT

Freebies!

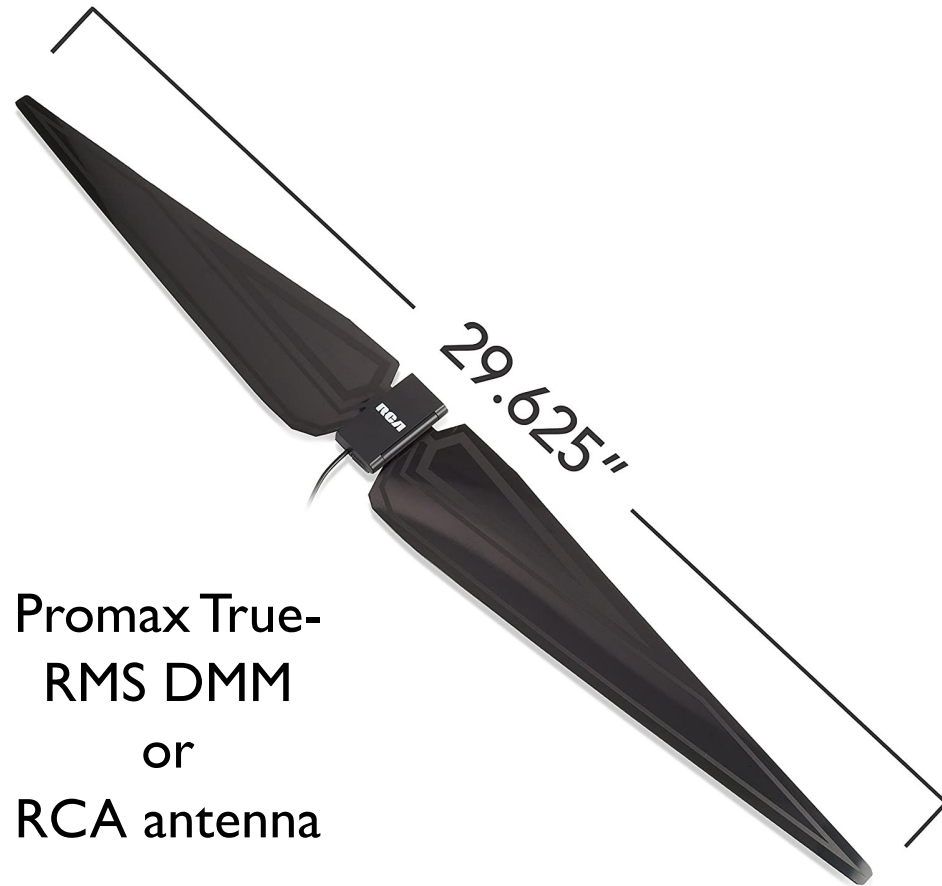


SOURCERER

YOUR SOURCE FOR
BROADCAST
TEST & MEASUREMENT

Door Prize!

Pick one:



Promax True-
RMS DMM
or
RCA antenna



Questions???

Thank you for your attention!

Tell all your friends about SOURCERER

Eddy Vanderkerken
SOURCERER, LLC

Phone: 214-912-5007
Website: www.sourcerer.biz



YOUR SOURCE
BROADCAST
TEST & MEASUREMENT